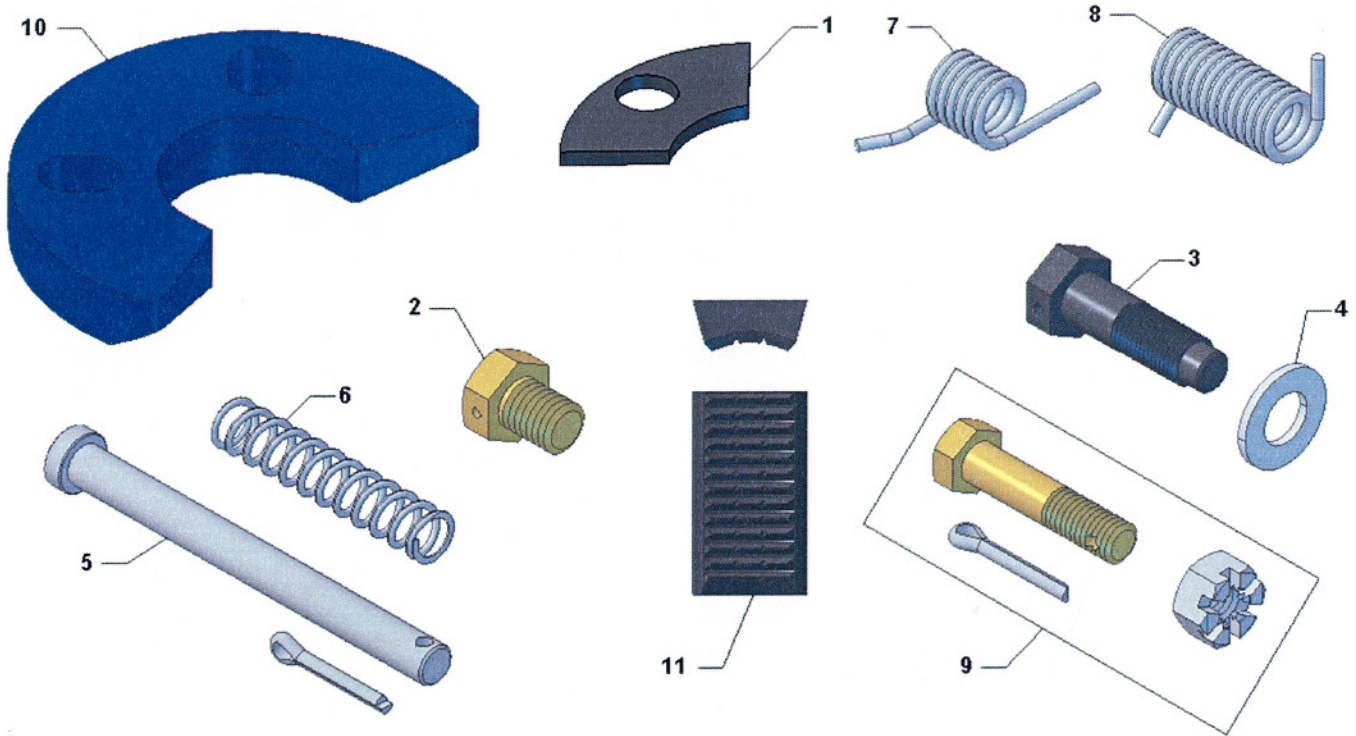


## "LYT" SLIP TYPE ELEVATOR



### REPLACEMENT PARTS FOR "LYT" SLIP TYPE ELEVATOR

ITEM#	DESCRIPTION	#REQ.	WT.
28786	1 INSERT RETAINER PLATE	4	.13
28787	2 INSERT RETAINER SCREW	2	.13
28785	3 SETTING PLATE BOLT	2	.25
339369-13	4 SETTING PLATE WASHER	2	.06
28760	5 SLIP BOLT	4	.25
28761	6 SLIP SPRING	4	.04
32486	7 LATCH SPRING	1	.08
28769	8 LATCH LOCK SPRING	1	.12
28764-1	9 LINK BLOCK BOLT KIT	4	.20

### SETTING PLATES

ITEM#	DESCRIPTION	#REQ.	WT.
28782	10 2 1/16" SETTING PLATE	1	2.25
28737	10 2" SETTING PLATE	1	2.35
28783	10 1 1/2" (1.900") SETTING PLATE	1	3.00
28784	10 1 1/4" (1.660") SETTING PLATE	1	3.10
28736	10 1" (1.315") SETTING PLATE	1	3.15
28735	10 3/4" (1.050") SETTING PLATE	1	3.20

### INSERTS

ITEM#	DESCRIPTION	#REQ.	WT.
28772	11 2 1/16" & 2" LYT INSERT	8	.25
28775	11 1 1/2" (1.900") LYT INSERT	8	.25
28778	11 1 1/4" (1.660") LYT INSERT	8	.25
28749	11 1" (1.315") LYT INSERT	8	.25
29370	11 3/4" (1.050") LYT INSERT	8	.25