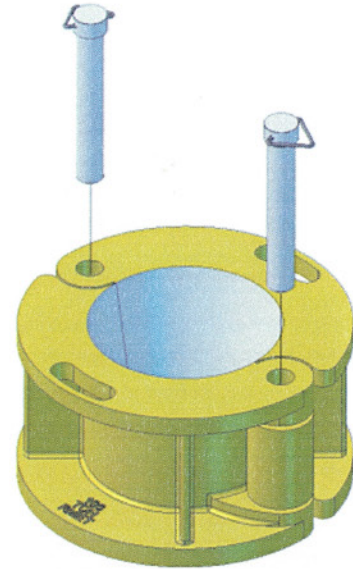


8-5/8" "API" BOWL

API BOWL has the same bore and taper (4" per ft.) as the API #3 split bowl. All API drill collar, drill pipe & casing slips can be used in this bowl. It has a range of 2-1/16" thru 10" F.J. and is rated for 100 tons.



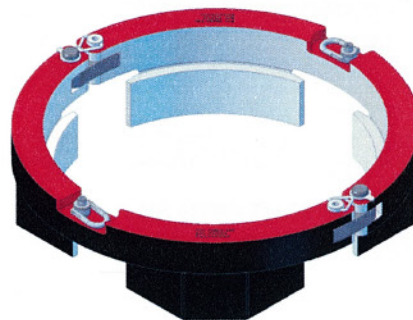
| | DESCRIPTION | #REQ. | WT. |
|--------|-----------------------------|-------|-------|
| 17-850 | 8-5/8" API BOWL | 1 | 600.0 |
| 17-851 | REMOVABLE HINGE PIN W/CHAIN | 2 | 8.0 |

FALSE ROTARY



| | DESCRIPTION | WT. |
|----------|--|------|
| RM51-500 | FALSE ROTARY TABLE FOR 18 5/8", 20", 24", AND 30" CASING | 2300 |

ADAPTER RING



| | DESCRIPTION | WT. |
|----------|---|------|
| RM52-100 | 37 1/2" OILWELL TO 37 1/2" NATIONAL ROTARY TABLE ADAPTER RING | 1118 |