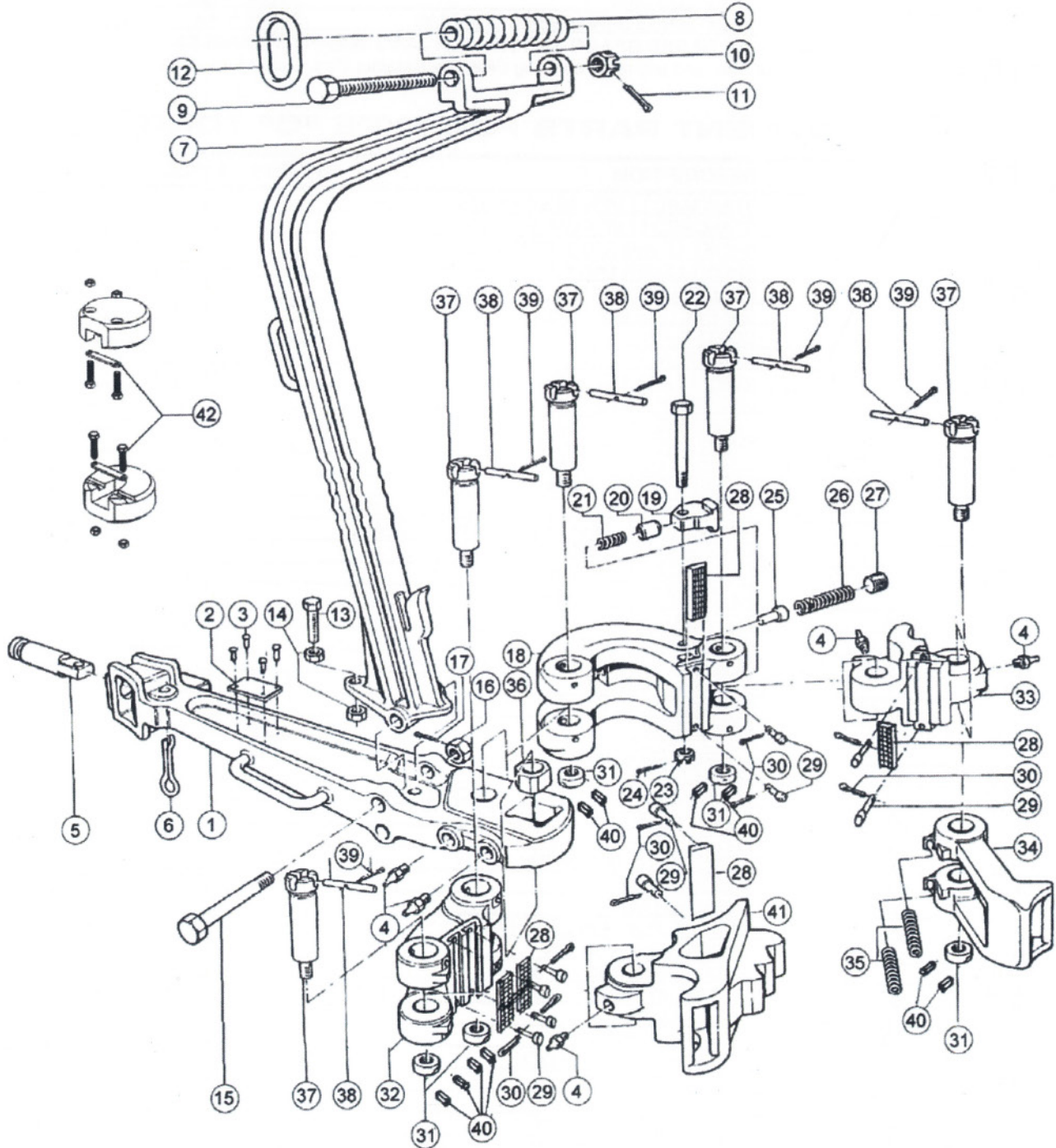


# AOT TYPE "B" TONG COMPLETE

AOT #	DESCRIPTION	WT.
T30114	TYPE B TONG COMPLETE W/STANDARD LEVER LESS LUG JAWS	395.00
T30114-1	TYPE B TONG COMPLETE W/SHORT LEVER LESS LUG JAWS	386.00

NOTE: ADD —ST TO END OF TONG P/N FOR TONG WITH SAFETY HANDLES & SET-BACK HANGER





## LUG JAW ASSEMBLIES FOR TYPE "B" TONG

AOT #	ITEM#	DESCRIPTION	TORQUE RATING	WT.
T11765-1	41	3 1/2 - 5 LUG JAW ASSEMBLY	55,000 ft. lbs.	30.00
T11196-3	41	4 1/4 - 6 3/4 LUG JAW ASSEMBLY	55,000 ft. lbs.	42.00
T11196-2	41	6 5/8 - 9 LUG JAW ASSEMBLY	55,000 ft. lbs.	53.00
T11297-1	41	9 - 10 3/4 LUG JAW ASSEMBLY	40,000 ft. lbs.	60.00
T13285-1	41	11 3/4 LUG JAW ASSEMBLY	40,000 ft. lbs.	61.00
T24592-3	41	12 3/4 - 13 LUG JAW ASSEMBLY	30,000 ft. lbs.	65.00
T24592-1	41	13 3/8 LUG JAW ASSEMBLY	30,000 ft. lbs.	28.00

**NOTE: ADD - SH TO END OF LUG JAW P/N FOR JAWS W/SAFETY HANDLES**

\*Lug Jaw Assemblies include Jaw, and any required Tong Dies, Die Retainer Pins, Cotter Pins; & Grease Fittings

## REPLACEMENT PARTS FOR TYPE "B" TONG

AOT #	ITEM #	DESCRIPTION	** SPARES	# REQ.	WT.
T12434-2	1-4	STANDARD LEVER ASSY. F/TYPE B TONG		1	133.00
T12434	1	STANDARD LEVER ONLY F/TYPE B TONG		1	124.00
T9568-1	1-4	SHORT LEVER ASSY. F/TYPE B TONG		1	124.00
T9568	1-4	SHORT LEVER ONLY F/TYPE B TONG		1	113.00
T2005682	2	NAME PLATE	1		.10
T53301-4-3	3	NAME PLATE SCREWS		4	.05
T53201	4	GREASE FITTING		2	.05
T9574	5	TONG LINE PIN F/TYPE B TONG	1	1	6.00
T25468	6	TONG LINE PIN RETAINER	2	1	1.00
T26782	7-14	HANGER ASSY. F/TYPE B TONG		1	56.00
T26783	7	HANGER ONLY F/TYPE B TONG		1	47.00
T26782-SH	7-14	SET BACK HANGER ASSY. F/TYPE B TONG		1	64.00
T26783-SH	7	SET BACK HANGER ONLY F/TYPE B TONG		1	55.00
T12586	8	BALANCING SCREW		1	2.75
T939099-596	9	BALANCING SCREW BOLT		1	2.10
T939484-8	10	BALANCING SCREW BOLT NUT		1	.40
T51402-14	11	COTTER PIN		1	.08
T12863	12	SUSPENSION RING		1	1.50
T939168-133	13	HANGER ADJUSTMENT SCREW		1	.75
T939248-8	14	HANGER JAM NUT		2	.25
T939097-556	15	HANGER BOLT	1	1	1.40
T940985-8	16	HANGER BOLT NUT	1	1	.25
T51402-16	17	COTTER PIN	1	1	.05
T11194-1	18-30	LONG JAW ASSY. F/TYPE B TONG		1	98.00
T11194	18	LONG JAW F/TYPE B TONG		1	95.00
T11139	19	ADJUSTABLE STOP		1	.75
T11144	20	ADJUSTABLE STOP PLUNGER		1	.15
T11192	21	ADJUSTABLE STOP SPRING		1	.15
T11191	22	ADJUSTABLE STOP BOLT		1	.55
T8150	23	ADJUSTABLE STOP BOLT NUT		1	.20
T51402-14	24	COTTER PIN		AS REQ.	.03
T11228	25	BOOSTER PLUNGER		1	.25
T11229	26	BOOSTER PLUNGER SPRING		1	.25
T940968-6	27	BOOSTER PLUNGER RETAINER PLUG		1	.25
T16402-2	28	1/2 X 1 1/4 X 5 7/8 TONG DIE	144	AS REQ.	.75
T17194	29	TONG DIE RETAINER PIN	32	AS REQ.	.03
T51402-6	30	COTTER PIN	32	AS REQ.	.01
T11142	31	HINGE PIN NUT	5	5	.35
T51506-8	40	GROOVE PIN F/HINGE PIN NUT	10	10	.05
T11197-1	32,28-30	SHORT JAW ASSY.		1	44.00
T11971	32	SHORT JAW ONLY		1	41.00
T11195-2	33, 28-30,4	LATCH JAW ASSY.		1	37.00
T11195	33	LATCH JAW ONLY		1	34.00
T11138-1	34, 31, & 40	LATCH ASSY.	1	1	28.00
T9561	35	LATCH SPRING	12	2	.10
T9572	36	LEVER HINGE PIN BLOCK	1	1	1.75
T11141	37	THREADED HINGE PIN	5	5	4.75
T11199	38	DOWELL PIN	5	5	.05
T51402-6	39	COTTER PIN	5	5	.01
T11140	NP	REMOVABLE HINGE PIN		NA	4.20
T20000-SH-2	42	SAFETY HANDLE KIT (fits all AOT tongs)	3	3	3.25

**NOTE: ADD -SH TO END OF LATCH JAW ASSEMBLY, LATCH OR LATCH LUG JAWS FOR SAFETY HANDLES**

\*\*RECOMMENDED SPARE PARTS FOR 1 YEAR