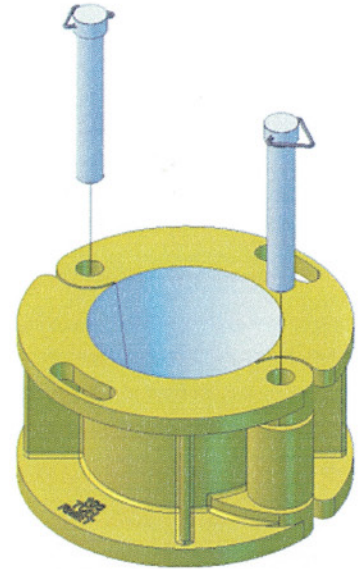


## 8-5/8" "API" BOWL

API BOWL has the same bore and taper (4" per ft.) as the API #3 split bowl. All API drill collar, drill pipe & casing slips can be used in this bowl. It has a range of 2-1/16" thru 10" F.J. and is rated for 100 tons.



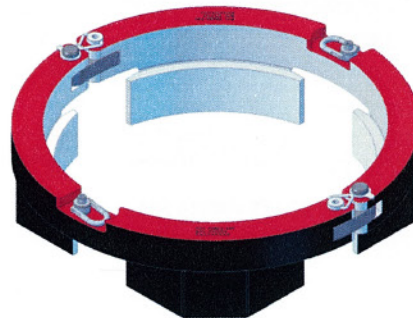
	DESCRIPTION	#REQ.	WT.
17-850	8-5/8" API BOWL	1	600.0
17-851	REMOVABLE HINGE PIN W/CHAIN	2	8.0

## FALSE ROTARY



	DESCRIPTION	WT.
RM51-500	FALSE ROTARY TABLE FOR 18 5/8", 20", 24", AND 30" CASING	2300

## ADAPTER RING



	DESCRIPTION	WT.
RM52-100	37 1/2" OILWELL TO 37 1/2" NATIONAL ROTARY TABLE ADAPTER RING	1118